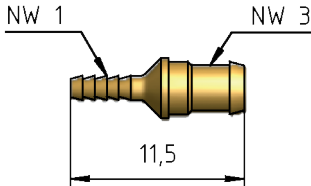

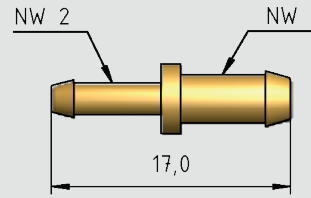
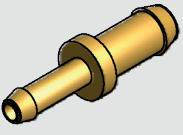
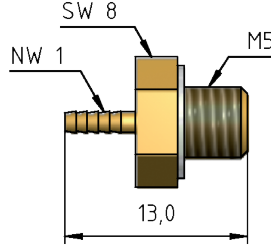

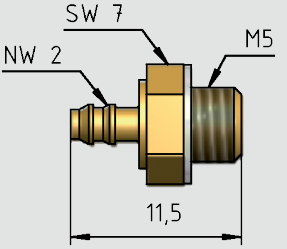

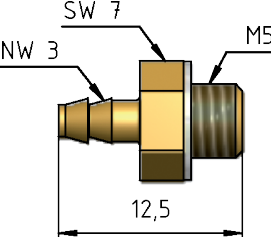



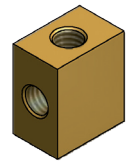
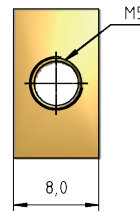
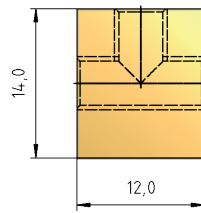
# Accessories Pneumatic Test Probes

| Designation /<br>Order-Number                       | Dimensions  |   |
|---|---|---|
| Reducer<br><b>RS 3/1</b>                            |    |    |
| Reducer<br><b>RS 3/2</b>                            |   |   |
| Threated Sleeve<br>(incl. 1 seal)<br><b>AV M5/1</b> |  |  |
| Threated Sleeve<br>(incl. 1 seal)<br><b>AV M5/2</b> |  |  |
| Threated sleeve<br>(incl. 1 seal)<br><b>AV M5/3</b> |  |  |

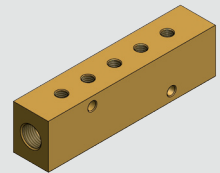
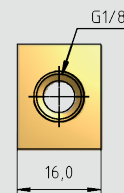
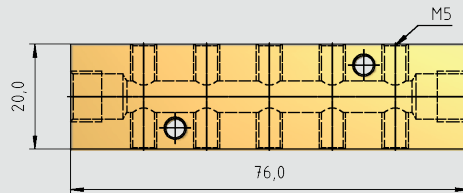
**Designation /  
Order-Number**

**Dimensions**

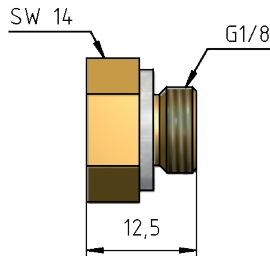
T-Piece  
**TS 3xM5**



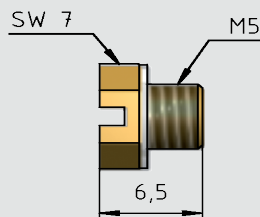
Tenfolder Distributor  
**V 10xM5**



Dummy Plug for Distributor  
(incl. 1 seal)  
**BSV 1/8**



Dummy Plug for Distributor  
(incl. 1 seal)  
**BSV M5**



Compressed Air Hose for NW 1  
**DS 1**

Compressed Air Hose for NW 3  
**DS 3**