

Series 1007/G

- Test probe for cable harness testing
- Screwable - threaded design
- Screwing tools available

Mechanical Data

Center	1.27 mm/50 mil
Full Travel	5.00 mm
Working Travel	4.00 mm
Pre-loaded Spring Force	0.20 N
Spring Force at Working Travel	1.10 N

Electrical Data

Max. Current Rating	3.0 A
Typical Continuity Resistance	<= 50 mOhm

Materials

Barrel	Bronze, gold plated
Spring	Spring Steel, gold plated
Plunger	CuBe, gold plated
Receptacle	Bronze, gold plated

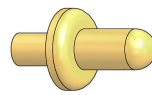
Recommended Diameter of Drill

HP 2361.1 (Trolitax)	0.99 mm
HGW 2372	1.00 mm

Tip style - Diameter - Plating

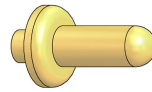


B	C	D	F
0.40C Au	0.90C Au	0.64C Au	0.64C Au



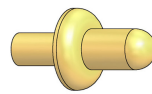
Tip Style	Tip diameter mm A	Plate Diameter mm B	Tip Length mm C	Overall length mm D	Extension Height mm E
D7001	0.60	1.00	1.80	29.70	11.30

D7001
0.60C Au



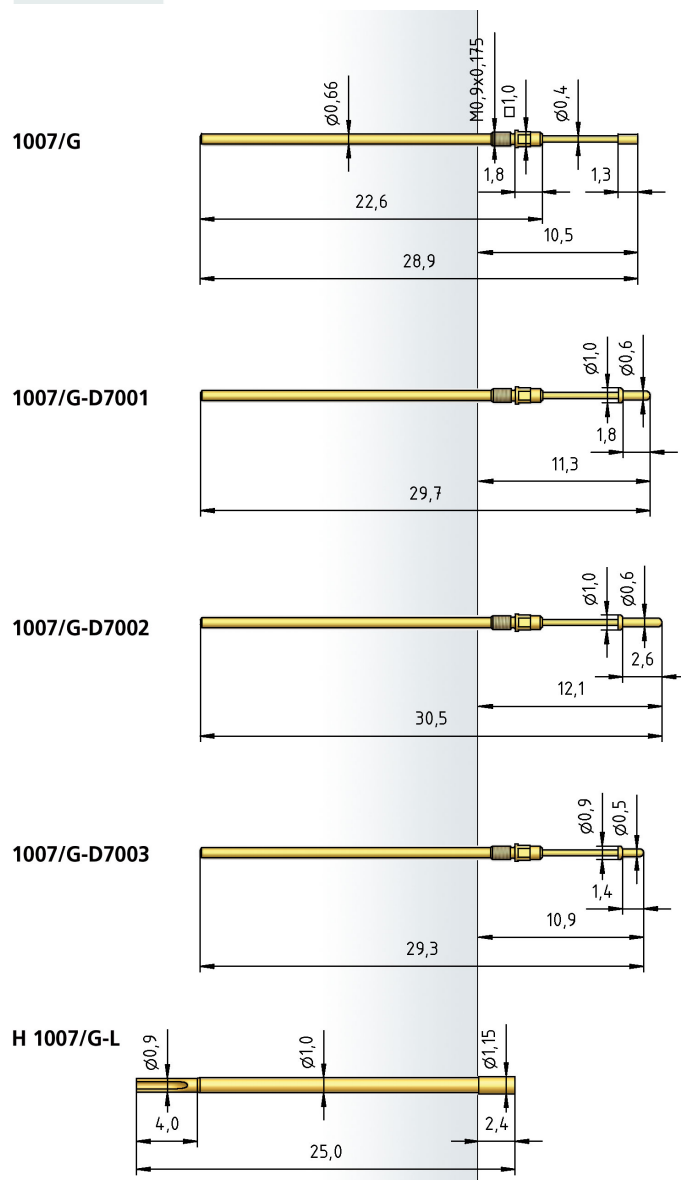
Tip Style	Tip diameter mm A	Plate Diameter mm B	Tip Length mm C	Overall length mm D	Extension Height mm E
D7002	0.60	1.00	2.60	30.50	12.10

D7002
0.60C Au



Tip Style	Tip diameter mm A	Plate Diameter mm B	Tip Length mm C	Overall length mm D	Extension Height mm E
D7003	0.50	0.90	1.40	29.30	10.90

D7003
0.50C Au



How to Order

1007/	G	-	B	-	1.1	N	-	Au	-	0.4	C
1	2	3	4	5	6	7					

1. Series 2. Threaded Design 3. Tip Style
4. Spring Force 5. Tip Plating 6. Tip Diameter
7. Tip Material (only for CuBe)